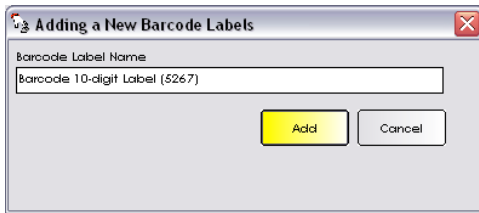


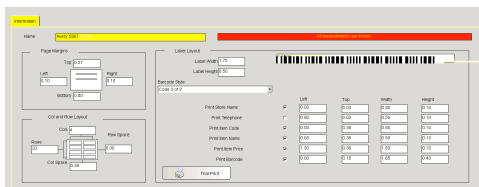
barcode 10-digit label

Use this guide to create 10-digit barcode labels using Avery 5267.



Label Setup

1. From the SalonBiz menu bar go to Blueprints and click on the Inventory button.
2. In the Table to Edit box, click on Barcode Labels.
3. To add this label, click on the Add button and type in Avery 5267.
4. To access this label, double click on the name or click once on the name and then click the Edit button.



Label Information

1. Page Margins:

Top:	0.27	Right:	0.10
Bottom:	0.00	Left:	0.10
2. Col and Row layout:

Col:	4	Row Space:	0.00
Row:	20	Col Space:	0.30
3. Label layout:

Label Width:	1.75
Label Height:	0.50
4. Select 3 of 9 in the Barcode Style drop down menu.

Print Options

1. Select all which you would like to have displayed on the label
2. Starting with LEFT (going down):
 - ☞ 0.00, 0.80, 0.00, 0.65, 1.30, 0.00
3. Starting with TOP (going down):
 - ☞ 0.03, 0.03, 0.38, 0.38, 0.38, 0.15
4. Starting with Width (going down):
 - ☞ 0.50, 0.50, 0.50, 0.50, 1.50, 1.65
5. Starting with Height (going down):
 - ☞ 0.10, 0.10, 0.10, 0.10, 0.10, 0.40